



SILVERTON

MARINE CORPORATION AN EMPLOYEE OWNERSHIP COMPANY

SERVICE BULLETIN

BULLETIN: 01-07

DATE: 3/19/2007

SUBJECT: BOWTHRUSTER FUSE HOLDER REPLACEMENT

HULL #s: PLEASE SEE ATTACHED LIST

Silverton Marine Corporation has recently discovered that there may be a problem with the wiring of the inline fuse. This problem could result in heat build-up in the body of the fuse holder, resulting in a fire hazard. In order to eliminate this condition, Silverton is providing a redesigned fuse holder, along with the following directions for replacing the fuse holder.

Parts List

Fuse Holder- Blue Sea Systems PN5003 750A	QTY 1	SMC #1032340
#14 x 1-1/2" Stainless Steel Pan Head Screws	QTY 4	SMC #1015372

Removal of Old Fuse and Fuse Holder

1. At the main AC distribution panel, turn the Bowthruster Battery Charger breaker to the OFF position.
2. Locate the bowthruster battery switch, and turn the switch to the OFF position. The location of the switch varies from model to model; please consult the Owner's Manual for your model for further information.
3. Remove the red positive cable from the positive terminal on the battery.
4. Remove the fasteners holding the battery cables and the fuse to the fuse holder.
5. Remove the battery cables and fuse from the holder. Do Not Discard the fuse, it will be reused with the new holder.
6. Remove the fuse holder, and discard.

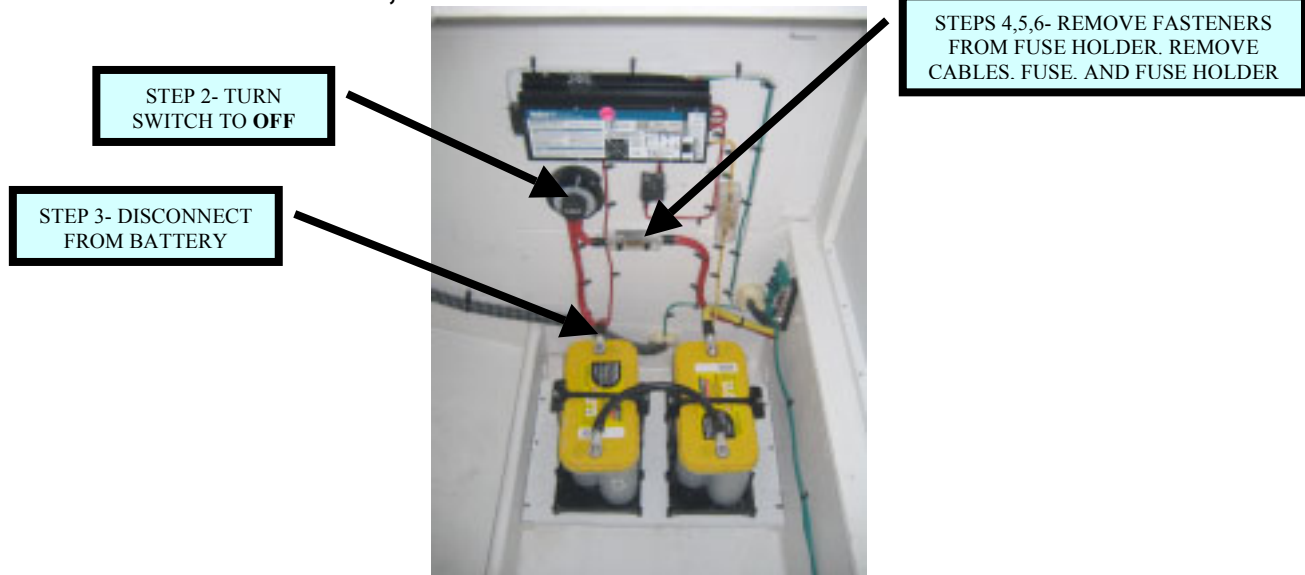


Fig. 1- Old Fuse Holder Removal

Installation of New Fuse Holder and Fuse

The new fuse holder has four separate fasteners for the electrical connections, two for holding the fuse and two for holding the electrical connections. This allows the fuse to be removed and replaced without affecting the cable connections.

1. Fasten the new fuse holder in the same location as the old holder, using the supplied #14 x 1-1/2" stainless steel screws.
2. Connect the electrical wiring to the two outermost connections on the fuse holder. The battery terminal **MUST** sit flat on the surface of the fuse holder, with nothing between the two faces. The washers must go on the top of the terminal, not between the fuse block and the terminal. Ensure that the fasteners are tight, and the cables cannot move around.

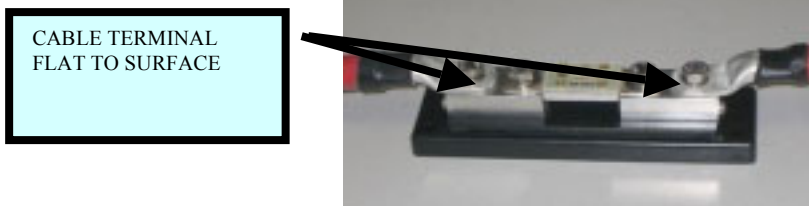


Fig. 2- Proper Cable Installation

3. Install the fuse between the two inner connections, also ensuring that the face of the fuse and the fuse holder are flat to each other, with the washers installed on top of the fuse blades. The correct fuse size is dependant upon the size of the bowthruster. All 24V BP900 thrusters use a 355A or 350A fuse, while the smaller 24V CT600 thrusters use a 300A. Ensure the correct size fuse is installed for the thruster in your boat.

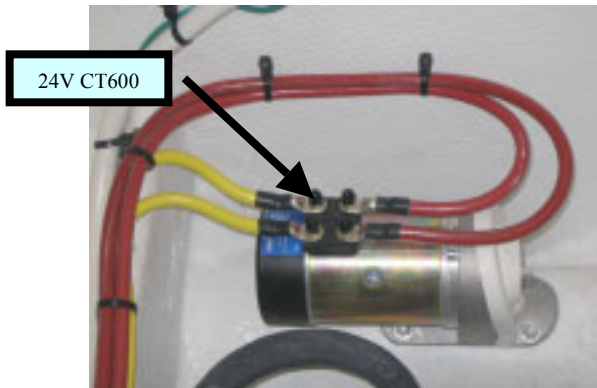


Fig. 3- CT600 THRUSTER

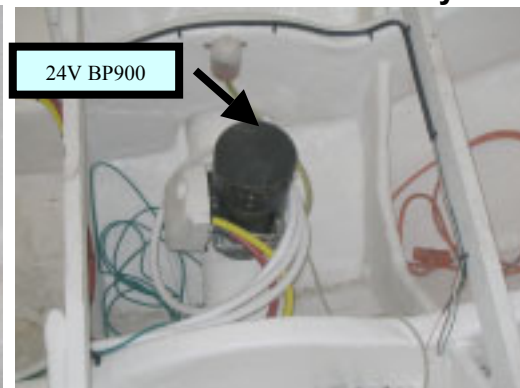


Fig. 4- BP900 THRUSTER

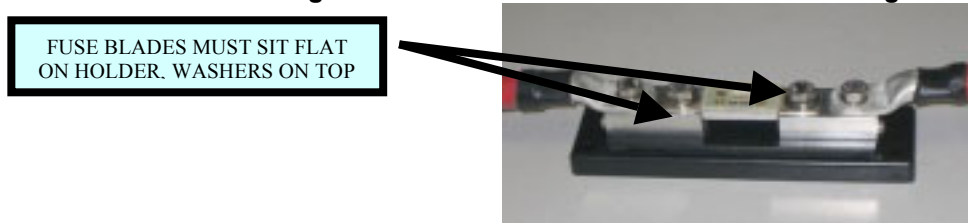


Fig. 5- PROPER FUSE INSTALLATION

4. Snap the translucent plastic cover over into the grooves on each side of the holder.
5. Reconnect the positive battery cable
6. Turn the battery switch to the ON position.

The system can now be returned to service.

Silverton will allow one hour labor to make this repair.

HULL NUMBERS AFFECTED BY BULLETIN:

330 Sport Bridge-	STNAD311C606 TO STNAD317D607
33 Convertible-	STNAU109F607 TO STNAU134L607
34 Convertible-	STNAN360B607 TO STNAN365E607
36 Convertible-	STNAY367E607 TO STNAY388J607
35 Motor Yacht-	STNAL147B606 TO STNAL152C607
38 Sport Bridge-	STNAP179E607 TO STNAP192L607
39 Motor Yacht-	STNAJ220L507 TO STNAJ229L607
42 Convertible-	STNAF283D607 TO STNAF284H607
43 Sport Bridge-	STNAR131F607 TO STNAR133G607
45 Convertible-	STNAS123D606 TO STNAS146K607
50 Convertible-	STNAT103K506 TO STNAT113G607